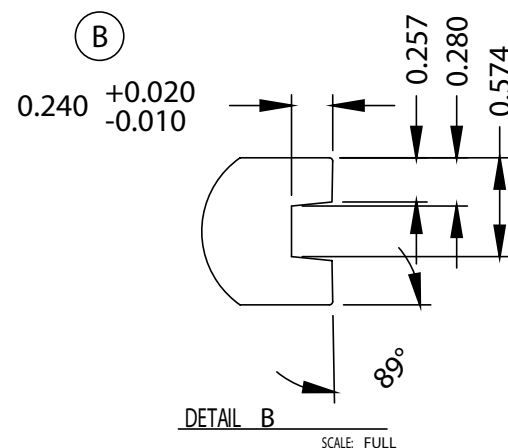
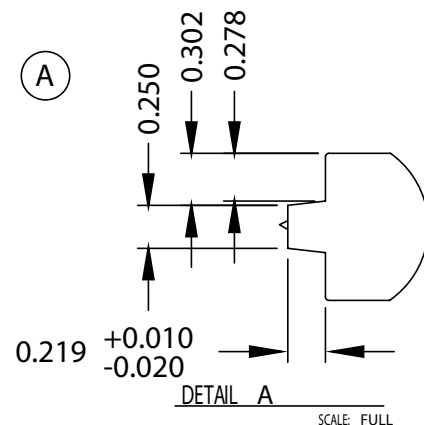
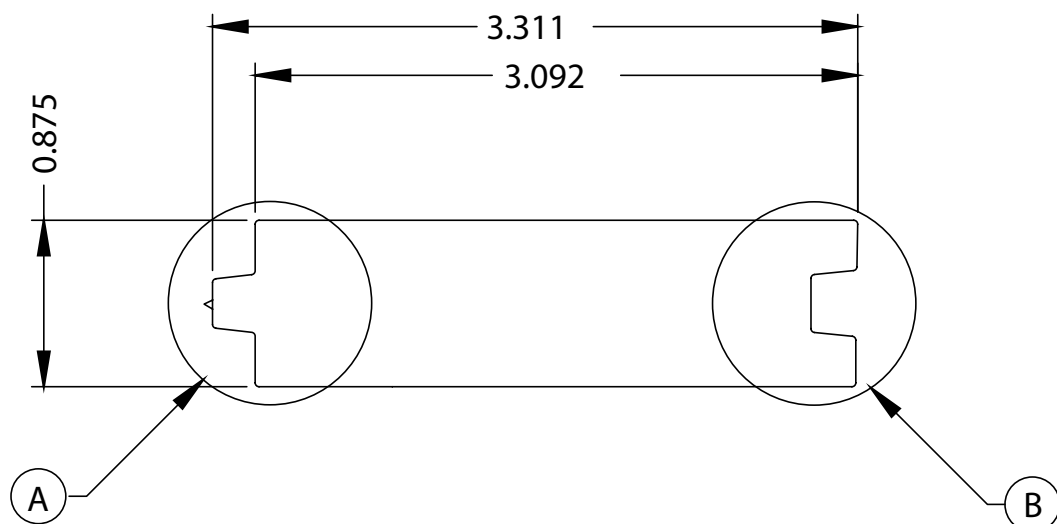


ÆRATIS®

PVC PORCH PRODUCTS

Heritage Product Line



Product Data:

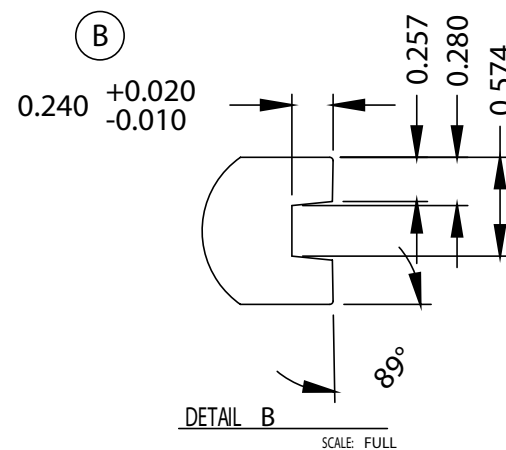
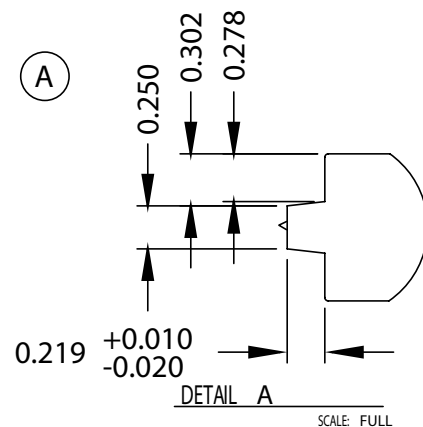
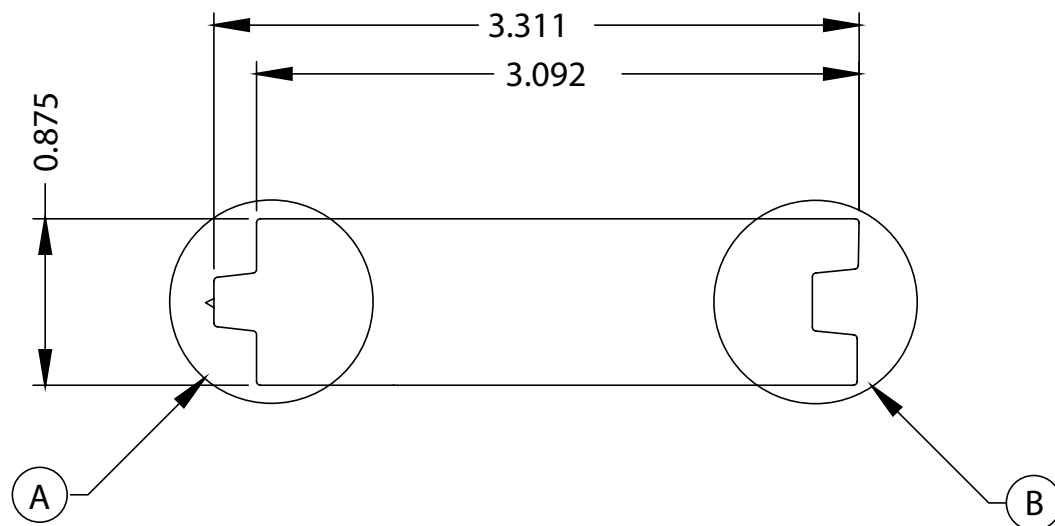
Lengths: 12', 16', 20' (1" longer than stated)
Color: Weathered wood, Vintage Slate, Battleship Gray
Fastening: Flooring nail/staples or trim-head screws
Ventilation: 0" / Ventilation not required
Span: 16" O.C. (Live load > 625 lbs p.s.f.)
Profile: Double sided (Embossing on both sides)

Approved by:	Aeratis Porch Products
REV:	1.01
Date:	01/29/2019
Type:	DWG/DXF/PDF/AI

ÆRATIS®

PVC PORCH PRODUCTS

Traditions Product Line



Product Data:

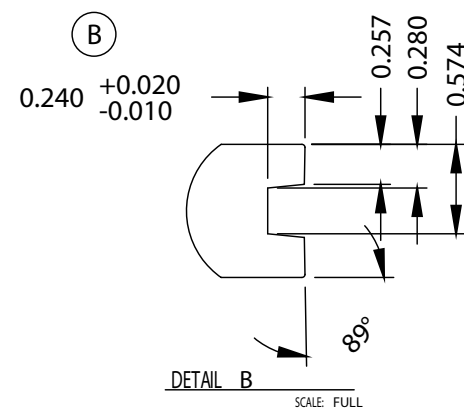
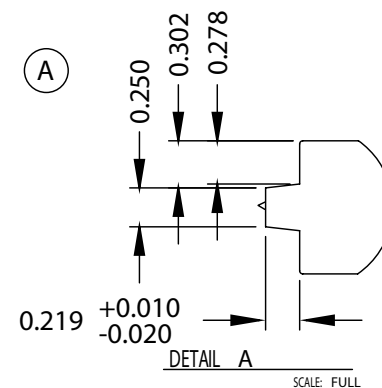
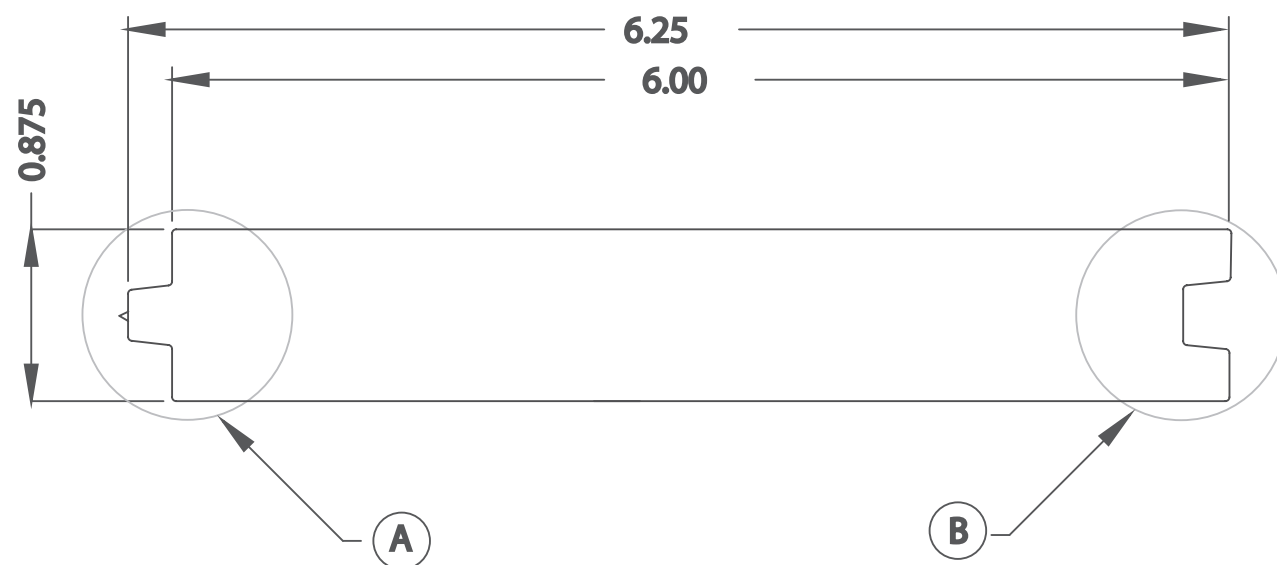
Lengths: 12', 16', 20' (1" longer than stated)
Fastening: Flooring nail/staples or trim-head screws
Ventilation: 0" / Ventilation not required
Span: 16" O.C. (Live load > 625 lbs p.s.f.)
Color: Paint Ready (5-A paint adhesion)
Profile: Double sided (Embossing on both sides)

Approved by:	Aeratis Porch Products
REV:	1.01
Date:	01/29/2019
Type:	DWG/DXF/PDF/AI

ÆRATIS®

PVC PORCH PRODUCTS

Legacy Product Line



Product Data:

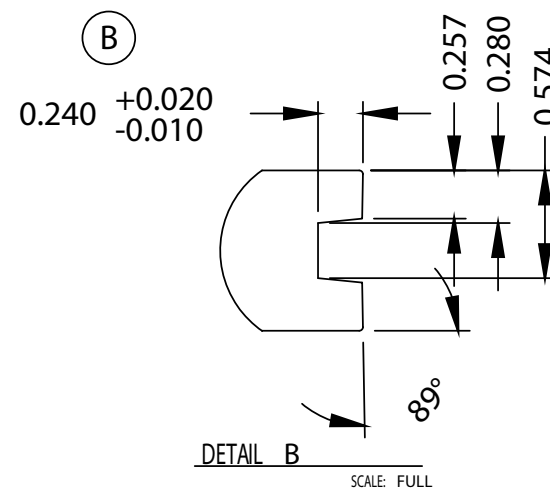
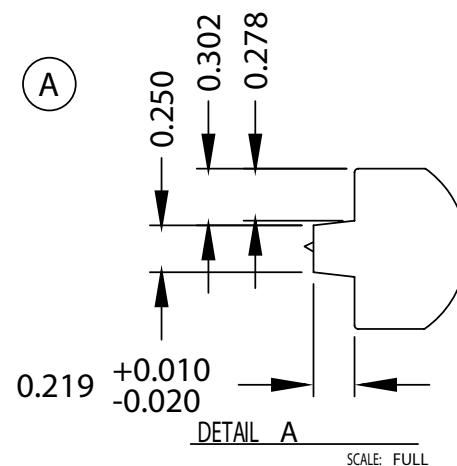
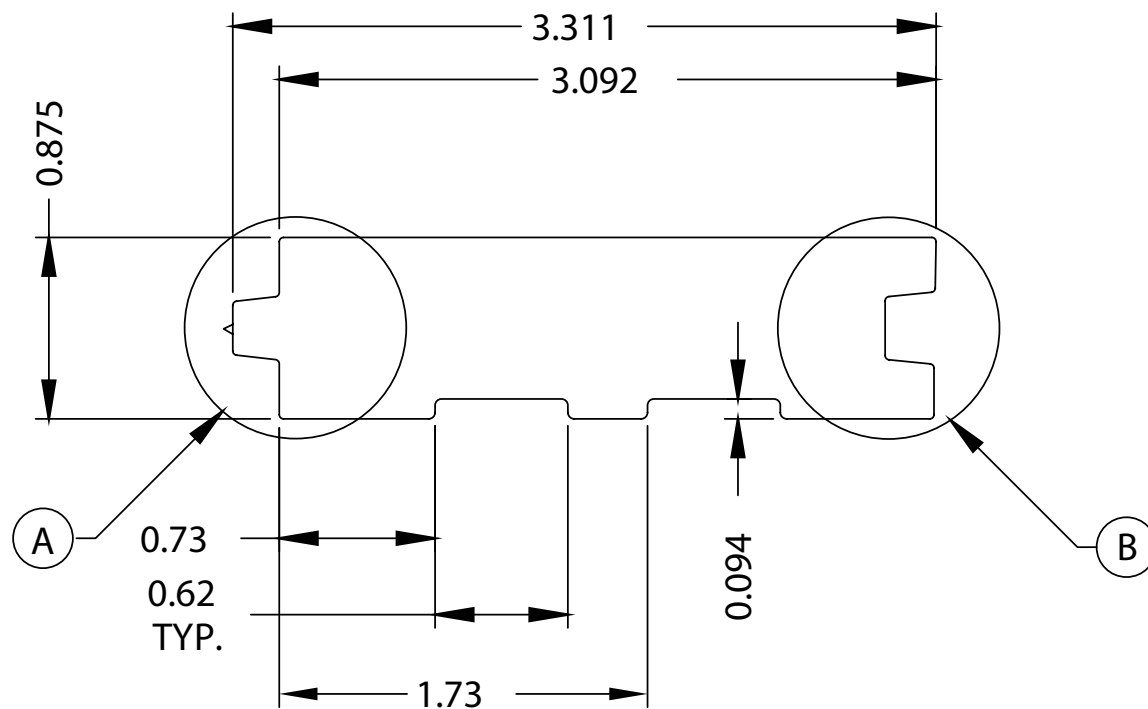
- Lengths:** 12', 16', 20' (1" longer than stated)
- Color:** Weathered Wood, Vintage Slate, Battleship Gray
- Fastening:** Flooring nail/staples or trim-head screws
- Ventilation:** 0" / Ventilation not required
- Span:** 16" O.C. (Live load > 625 lbs p.s.f.)
- Fire Rating:** Class "B" flame spread and under flame

Approved by:	Aeratis Porch Products
REV:	1.01
Date:	01/29/2019
Type:	DWG/DXF/PDF/AI

ÆRATIS®

PVC PORCH PRODUCTS

Classic Product Line



Product Data:

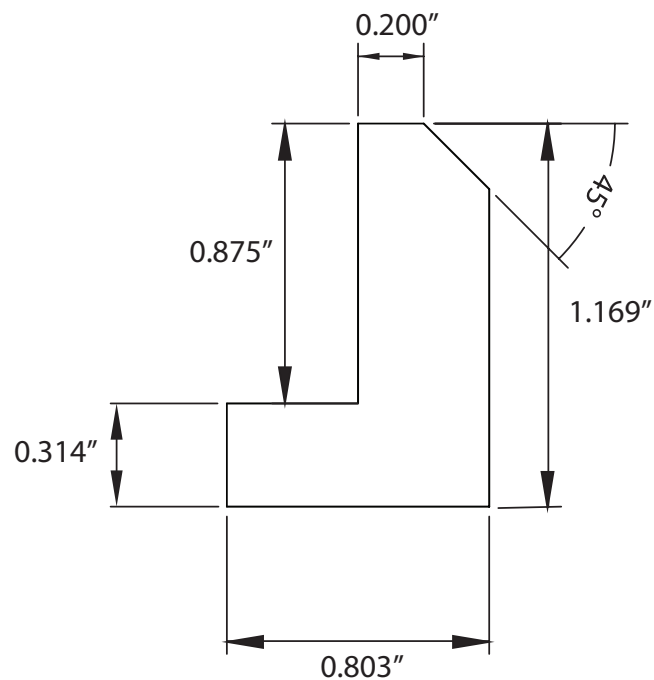
- Lengths:** 12', 16', 20' (1" longer than stated)
- Color:** Weathered Wood, Vintage Slate, Battleship Gray
- Fastening:** Flooring nail/staples or trim-head screws
- Ventilation:** 0" / Ventilation not required
- Span:** 16" O.C. (Live load > 625 lbs p.s.f.)
- Fire Rating:** Class "A" flame spread and under flame

Approved by:	Aeratis Porch Products
REV:	1.01
Date:	01/29/2019
Type:	DWG/DXF/PDF/AI

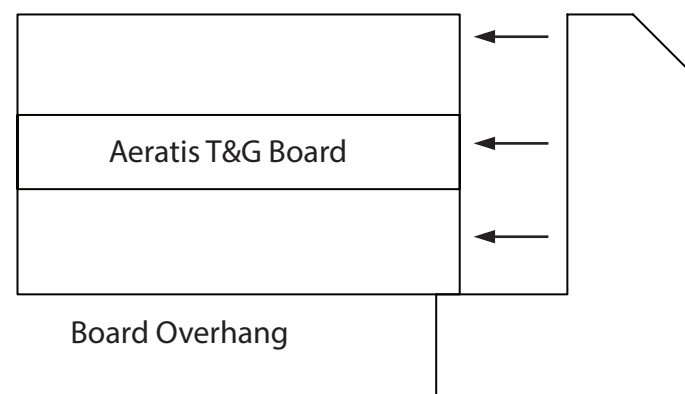
ÆRATIS®

PVC PORCH PRODUCTS

Chamfer Trim



Chamfer Application



Product Data:

Lengths: 8' (1" longer than stated)

Color: Weathered Wood, Vintage Slate, Battleship Gray

Fastening: Trim-head screw every 12" Clear PVC Glue

Hole Filler: Plugs made from plug maker

Material: Solid extruded PVC (sealed edges)

Application: Cover ends of the boards if desired

Approved by: Aeratis Porch Products

REV: 1.01

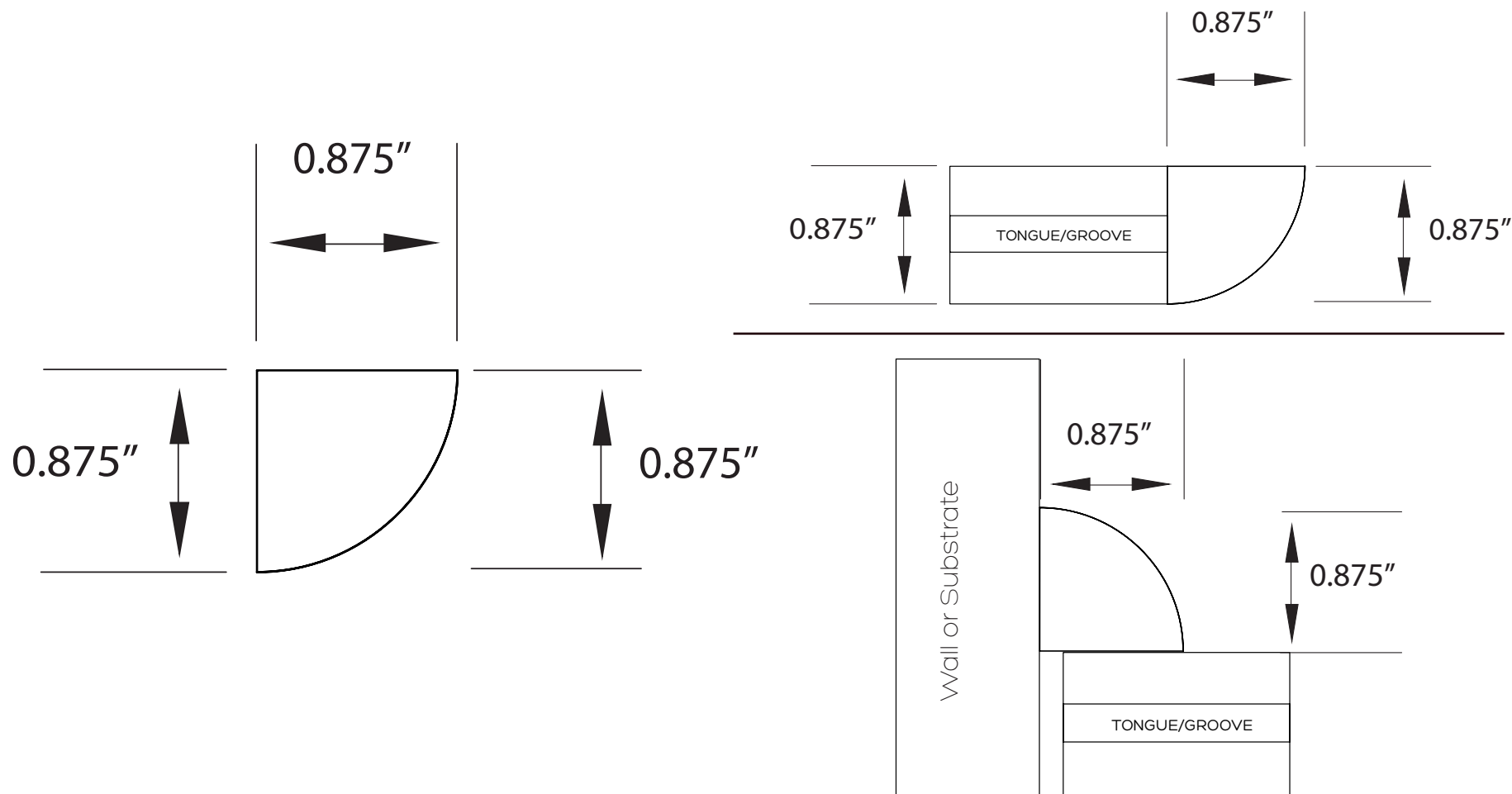
Date: 01/29/2019

Type: DWG/DXF/PDF/AI

ÆRATIS®

PVC PORCH PRODUCTS

Quarter Round



Product Data:

Lengths: 8' (1" longer than stated)

Color: Weathered Wood, Vintage Slate, Battleship Gray

Fastening: Trim-head screw every 12" Clear PVC Glue

Hole Filler: DAP Blend Stick

Material: Solid extruded PVC (sealed edges)

Application: Hide where floor terminated into vertical wall

Approved by: Aeratis Porch Products

REV: 1.01

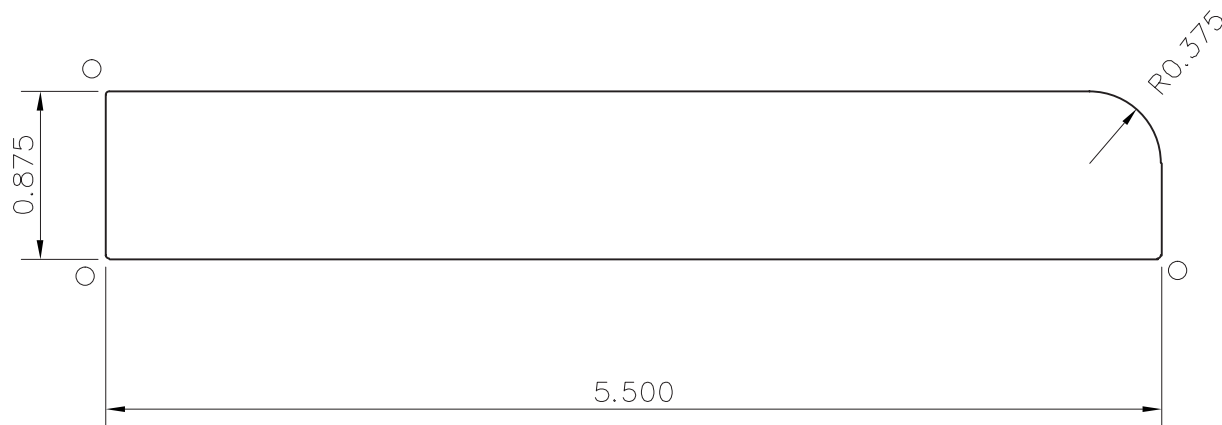
Date: 01/29/2019

Type: DWG/DXF/PDF/AI

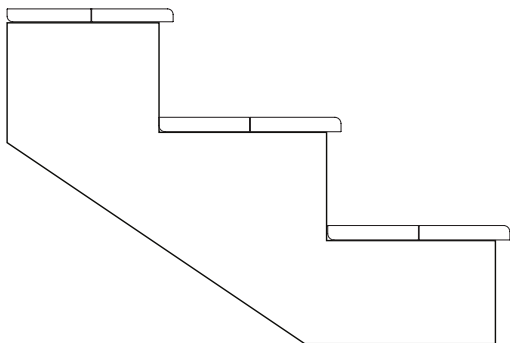
ÆRATIS®

PVC PORCH PRODUCTS

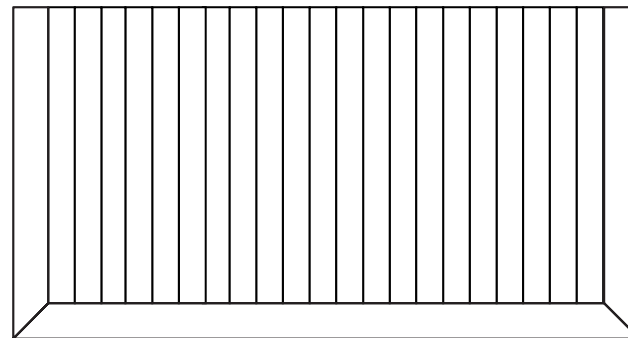
Universal Porch Plank



Stair Application



Picture Frame



Product Data:

Lengths: 12' (1" longer than stated)

Color: Weathered Wood, Vintage Slate, Battleship Gray, Paint-Ready

Fastening: Trim-head screws (Face screw and fill)

Ventilation: 0" / Ventilation not required

Span: 16" O.C. (Live load > 225 lbs p.s.f.) 12" O.C. on stairs

Profile: Double sided

Approved by: Aeratis Porch Products

REV: 1.01

Date: 01/29/2019

Type: DWG/DXF/PDF/AI

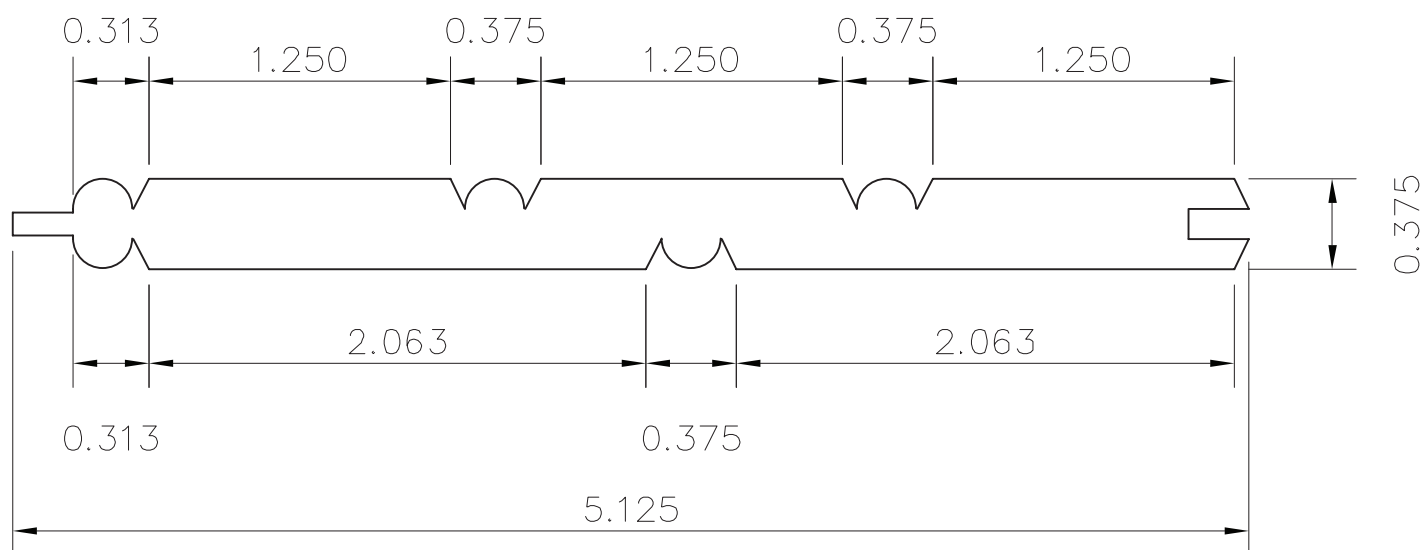
ÆRATIS®

PVC PORCH PRODUCTS



TRADITIONS TWENTY-FOUR

Porch Ceiling & Wainscoting



Product Data:

Lengths: 16' (1" longer than stated)

Color: Paint-Ready

Fastening: Finish nail/staples or trim-head screws

Ventilation: 0" / Ventilation not required

Span: 24" O.C.

Profile: Double sided

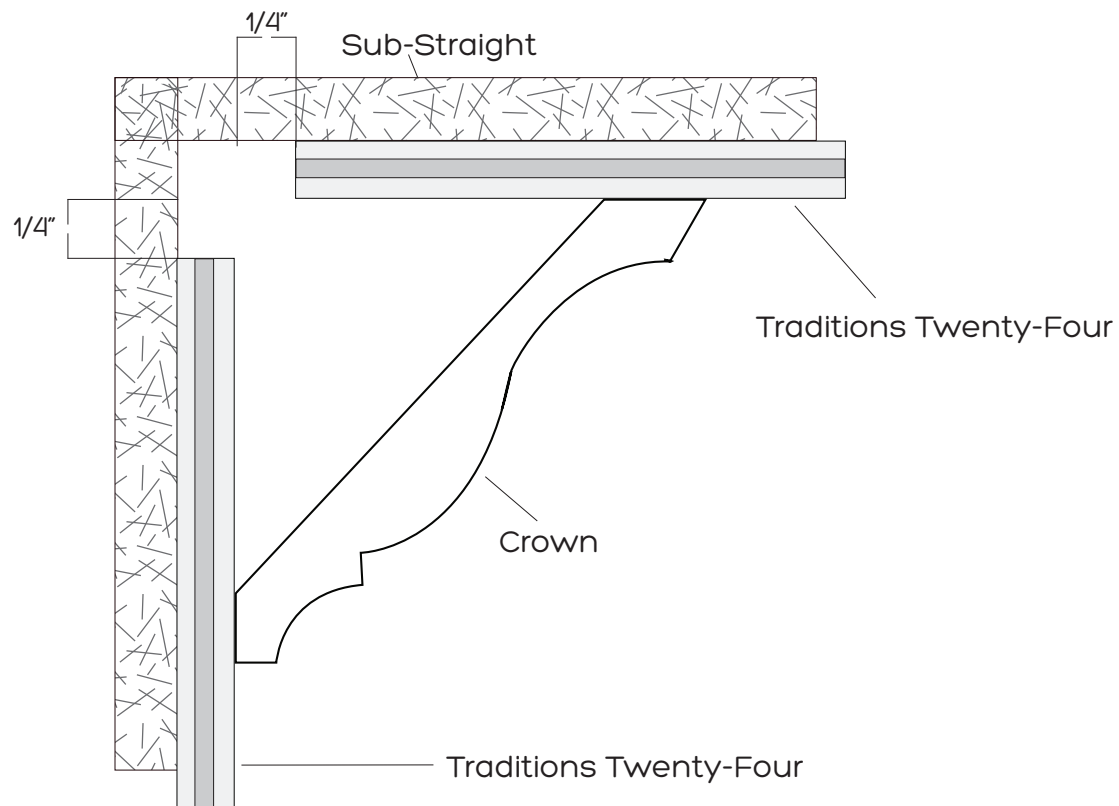
Approved by: Aeratis Porch Products

REV: 1.01

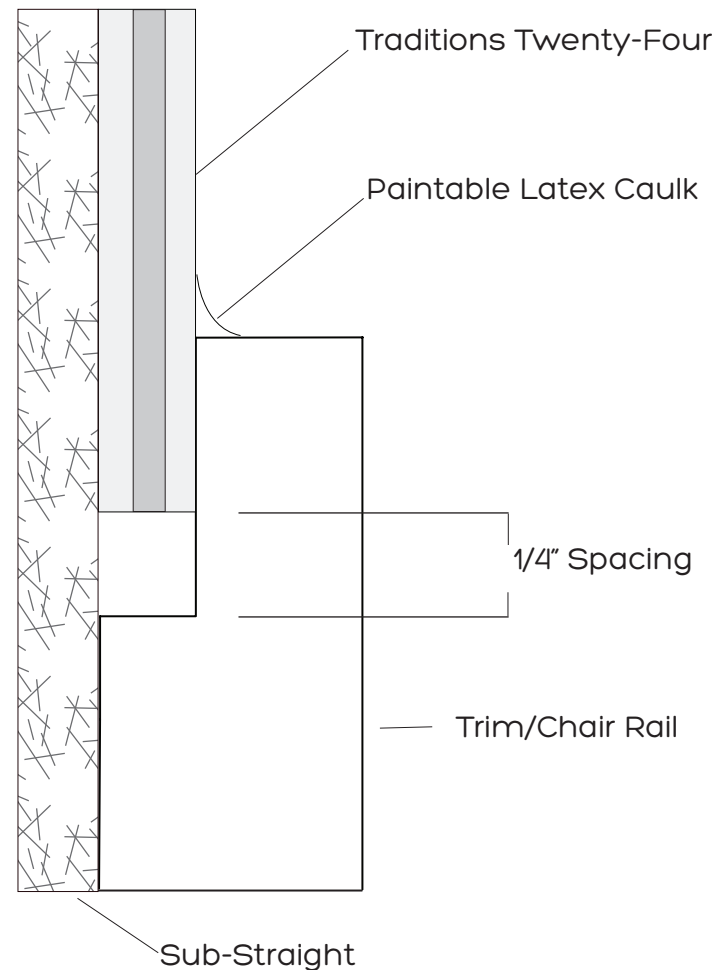
Date: 01/29/2019

Type: DWG/DXF/PDF/AI

Horizontal/Ceiling Application



Wainscoting/Vertical Application



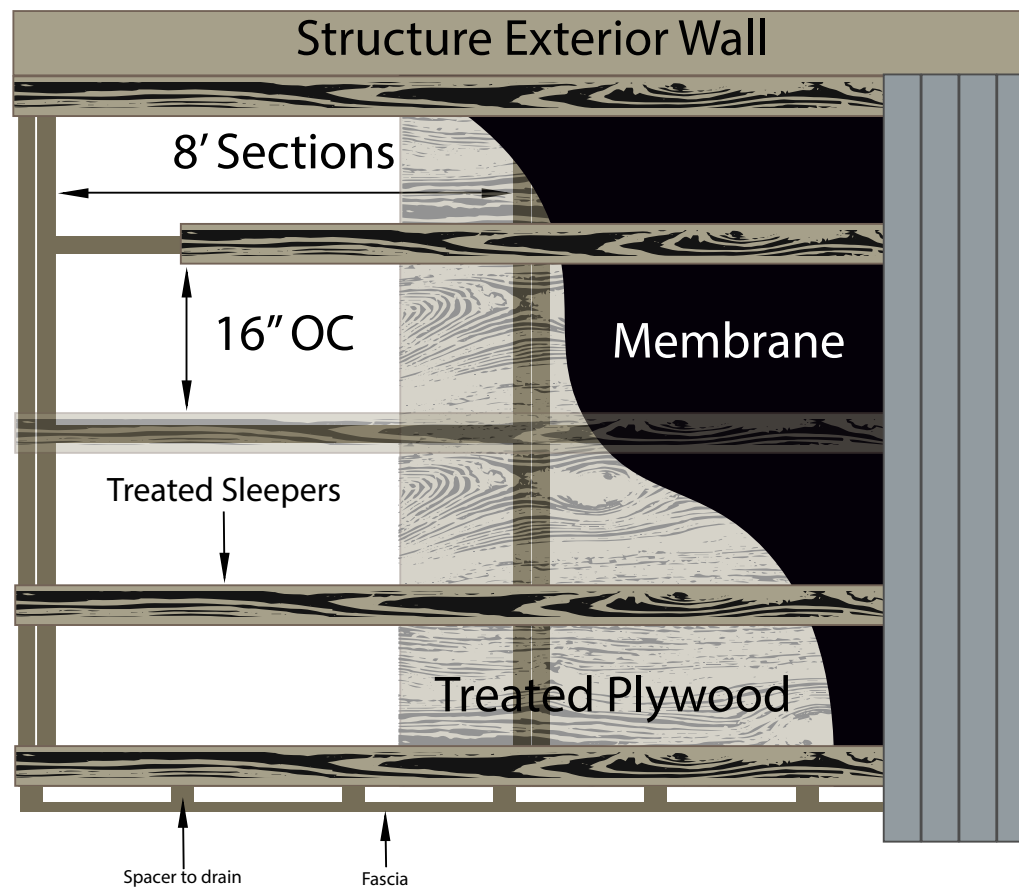
Installation Note:

A 1/4" gap between the ends of the boards and the wall or trim board must be provided. See above installation drawing.

Approved by:	Aeratis Porch Products
REV:	1.01
Date:	01/29/2019
Type:	DWG/DXF/PDF/AI

Waterproof Installation

Perpendicular Installation

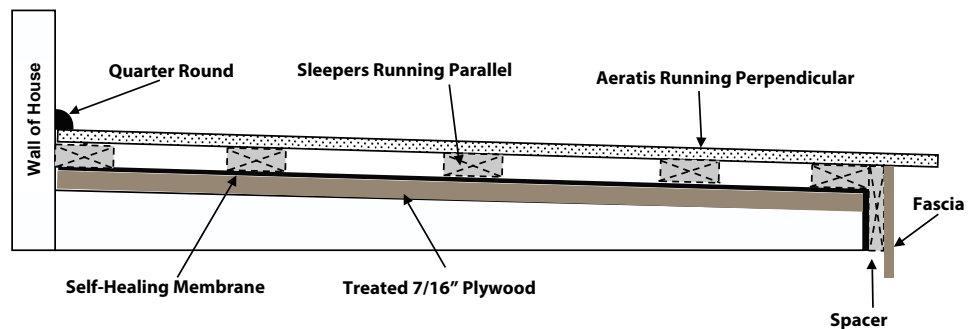


Installation Note:

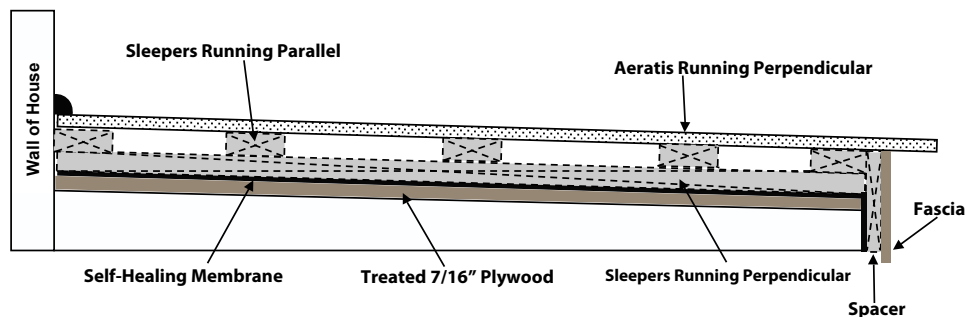
Waterproof Installation instructions drawings.

Approved by:	Aeratis Porch Products
REV:	1.01
Date:	01/29/2019
Type:	DWG/DXF/PDF/AI

Waterproof Installation with Single Sleeper System



Waterproof Installation with Criss-Cross Sleeper System



Installation Note:

Waterproof Installation instructions drawings.

Approved by:	Aeratis Porch Products
REV:	1.01
Date:	01/29/2019
Type:	DWG/DXF/PDF/AI